

GREENPAGE

NEWSLETTER OF THE MUNDARING AND
KALAMUNDA FRIENDS GROUPS AND
EASTERN HILLS CATCHMENT GROUPS

October 2011

THIS MONTH...

- 2011 Maylands Home Expo & Sustainable Living Fair
- Bush Skills for the Hills workshops
- DET Urban Nature Survey



For more information contact:

Shire of Mundaring
Bushcare Co-ordinator
on (08) 9290 6685.

Shire of Kalamunda
Environmental Reserves
Officer on (08) 9257 9806.

Eastern Hills Catchment
Management Program—
EMRC office (08) 9424 2216.

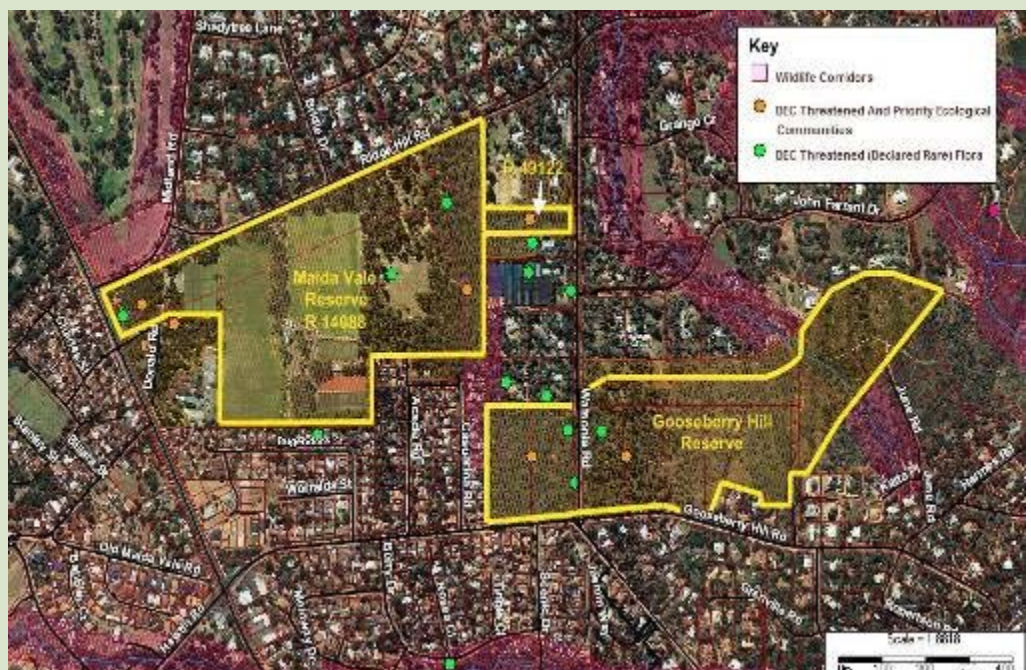
Working Together At Watsonia Road

By Michelle Yeomans

The Shire of Kalamunda, Department of Environment and Conservation (DEC), Eastern Metropolitan Regional Council (EMRC) and Friends of Maida Vale Reserve are working in partnership on a project to improve the ecological integrity of priority reserves on Watsonia Road in Gooseberry Hill and Maida Vale. These reserves are Gooseberry Hill Reserve (managed by DEC), Maida Vale Reserve (R 14088); and the adjacent untitled reserve R 49122 (managed by the Shire of Kalamunda). These reserves are of special conservation significance as they are 'Bush Forever' sites, they contain Threatened Ecological Communities (TECs) and Declared Rare Flora (DRF), and they form part of a network of wildlife corridors.

The project, with funding from DEC's Environmental Community Grants 2011 Program, will allow for strategic, targeted weed control to manage weeds including watsonia, gladiolus, cotton bush, tambookie grass, veldt grass, haas grass and various woody weeds, preparing the sites for further rehabilitation. Dieback mapping on Maida Vale Reserve will also be undertaken to enable better quality planning for future dieback management actions including phosphite treatment and dieback protection area signage. The project will help to conserve the TEC's and DRF across tenure, and will support the efforts of the volunteer Friends Group.

For more information about the project, please contact Michelle Yeomans, NRM Officer at EMRC on (08) 9424 2264, or Shenaye Hummerston, Environmental Reserves Officer at the Shire of Kalamunda on (08) 9257 9806.



Location of Gooseberry Hill Reserve, Maida Vale Reserve, and the untitled reserve R 49122

In loving memory from Steve Gibellini
FOE founder of his much loved partner
Joanne who will never be forgotten

Hills Forest Festival 2011

SUNDAY 23 OCTOBER 2011

10.00AM - 3.00PM

ECOEDUCATION, HILLS FOREST CENTRE
BEELU NATIONAL PARK, MUNDARING WEIR WA

CELEBRATING SUSTAINABLE ACHIEVEMENTS IN THE INTERNATIONAL YEAR OF FORESTS

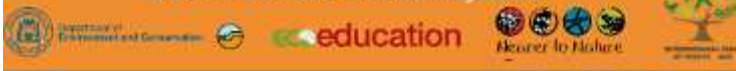


ENTRY IS FREE!
Everyone's welcome

Explore the beautiful jarrah and marri forest and join in hands-on family fun activities including guided wildflower walks, native animal encounters, Aboriginal culture experiences, art workshops, live music and bush dancing. There will be a cryptic puzzle to solve, competitions, a bouncy castle for the kids and other fun activities and giveaways!



For more information:
phone 9295 6149 or 9295 6300, email ecoeducation@dec.wa.gov.au
or visit EcoEducation online at www.dec.wa.gov.au/ecoeducation
or *Nearer to Nature* online at www.dec.wa.gov.au/n2n



This is a Free event and if you require further information please
email Lisa.Ingram@dec.wa.gov.au

Free events to celebrate Seniors Week

This year Shire of Mundaring is planning something a little different to celebrate Seniors Week.

Local community groups have been invited to host a Conversation Café event at various locations on Tuesday, 8 November from 10:00am to 12.30pm.

The Bendigo Bank Seniors Week Conversation Cafes will be held at 11 locations throughout the shire. All of the Conversation Cafes will be free of charge and provide opportunities for seniors to share their ideas in a friendly relaxed setting, while enjoying morning tea.

For more information contact:
**Shire of Mundaring Communications
Advisor**
Rebecca Noakes on 0409 294 098



Centre of Excellence for Climate Change
Woodland & Forest Health

Managing Healthy Forests Symposium

Friday, 21 October, 8.30 am - 5.00 pm
Valley View Restaurant and Reception Centre,
10481 West Swan Rd, Henley Brook

Featuring presentations from Prof. Nicholas Coops, Dr. Geoff Stoneman and key researchers from the Western Australian State Centre of Excellence for Climate Change, Woodland and Forest Health, the Symposium will deliver information and adaptive management options to improve and maintain the health of woodlands, forests and ecosystem services.

For more information, please visit www.foresthealth.com.au



CATCHMENT GROUP MEETINGS

Blackadder-Woodbridge Catchment Group Incorporated AGM

7.00 pm Wednesday, 19 October 2011

Midland Church of Ascension Hall (Side Room), 17 Spring Park Road, Midland
Contact Karen Warner on (08) 9424 2242 or email: karen.warner@emrc.org.au

Friends of Piesse Brook

7.00 pm Thursday, 20 October 2011

215 Hummerston Road, Piesse Brook
Contact Michelle Yeomans on (08) 9424 2264 or email: michelle.yeomans@emrc.org.au

Susannah Brook Catchment Group Incorporated

7.15 pm Thursday, 13 October 2011

Gidgegannup Landcare Centre, Gidgegannup Showgrounds, Toodyay Rd
Contact Renee D'Herville on (08) 9424 2245 or email: renee.dherville@emrc.org.au

Helena River Catchment Group Incorporated

7.00 pm Monday, 17 October 2011

AGM followed by Catchment Group Meeting

Octagonal Hall, 52 McGlew Road, Glen Forrest.
Contact Michelle Yeomans on (08) 9424 2264 or email: michelle.yeomans@emrc.org.au

Jane Brook Catchment Group Incorporated

7.15 pm Thursday, 27 October 2011

Parkerville Fire Station, Riley Road, Parkerville
Contact Renee D'Herville on (08) 9424 2245 or email: renee.dherville@emrc.org.au

| | | |
|--|---|---|
| <p><i>The Darling Range Naturalists' Club</i></p> <p>When: 7.30 pm Friday, 14 October 2011</p> <p>Venue: CWA Hall, 22 Central Road, Kalamunda</p> <p>Speaker: Kayley Usher</p> <p>Topic: "How Marvelous Microbes Made Our World"</p> <p>Visitors welcome</p> <p>For further details, please phone: (08) 9293 1676 or (08) 9294 1044</p> | <p><i>Wildflower Society of WA Eastern Hills Branch Meeting</i></p> <p>When: 7.30 pm Friday, 28 October 2011</p> <p>Venue: Octagonal Hall, McGlew Road, Glen Forrest</p> <p>Speaker: Val English</p> <p>Topic: "WA's Dry Rainforest, Life on the Edge"</p> <p>Visitors welcome</p> <p>For further details, please phone (08) 9298 8645 or (08) 9294 1044</p> | <p><i>Wildflower Society of WA Darling Range Branch</i></p> <p>When: 7.30 pm Friday, 25 October 2011</p> <p>Venue: CWA Hall, 22 Central Road, Kalamunda</p> <p>Speaker: Cheryl Gole</p> <p>Topic: "Birds of the Darling Range"</p> <p>Visitors welcome</p> <p>For further details, please phone Debbie on 0416 871 902</p> |
|--|---|---|

Community news, Events & Information

SAVE MONEY,
slash your power bills,
beat the 50% power
increases
www.greatgardens.info



GREAT Homes & Gardens






2011 NEW SERIES

Turn your garden into a *natural* air conditioner

- + Create a beautiful drought-proof garden
- + Win free prizes and give-aways

Free Workshops Create an *Energy-Smart* home

- + Save Hundreds of dollars on Solar PV Systems
- + Learn about the Generous Government Feed-In Tariff

| LOCATION | DATE & TIME |
|--|---|
| Forrestfield • Free to attend! Woodlupine Community Centre 88 Hale Road, Forrestfield | Wednesday 23rd November 2011 6.30pm–9.30pm |

Book early & don't miss out! For free information or to register online visit www.greatgardens.info or phone our hotline on **1300 884 764**



Proudly supported by:



energy solutions you can use





shire of kalamunda



woodside



GRAB A TORCH
& HAVE SOME FUN



Night Stalk

1 September – 16 October

Australia's biodiversity is unique and important. Do you know which animals live near you?

We need your help!

Get a group together and conduct a Tiwest Night Stalk – a national spotlight survey of animal species. It's very easy to conduct a survey in your local area and the information you collect is used to compile an Australia wide animal database.

Anyone can do it!

For more information:
 Phone: (08) 9474 0457
 Web: perthzoo.com.au
 Email: nightstalk@perthzoo.wa.gov.au





Discovery & Learning
Perth Zoo





BUSH SKILLS FOR THE HILLS WORKSHOPS



Ants on Kingia australis

Rapid Bushland Assessment

Date: Saturday, 15 October 2011

Time: 10.00 am - 12.00 pm

Venue: Parkerville Hall, Cnr Seaborne Street and Riley Road

Come and learn from Department of Environmental and Conservation (DEC) expert Geoff Barrett how to carry out Rapid Habitat Assessments using techniques, including ant sampling and bird surveys to further extend your knowledge of the behind-the-scenes

Native Freshwater Fish Conservation

Date: Saturday, 22 October 2011

Time: 10.00 am - 12.00 pm

Venue: Mahogany Creek Hall, 3060 Strettle Road, Mahogany Creek

The results of a study on the biodiversity of native freshwater fish on Helena River will be presented by EMRC. The Swan River Trust will follow with a presentation on Perth's high water demand and how this impacts on the river ecosystem. In addition, a discussion on the importance of environmental water releases to the biodiversity and water quality on the areas downstream of Perth's dams, with a focus on the lower Helena River.



**Western Minnow
(Galaxias Occidentalist)
Photo: D Morgan**



Seed Cleaning

Be Smart with Seed—Native Seed Collection Short Course

Dates: Wednesday, 23 November 2011;
Saturday, 26 November 2011; and
Wednesday, 7 December 2011

Times: Session 1: 6.00 pm - 9.00 pm;
Session 2: 9.00 am - 12:30 pm; and
Session 3: 6.00 pm - 9.00 pm

Venues: Polytechnic West, Joanna Seabrook Seed Orchard & Octagonal Hall

Learn practical skills to help regenerate your local bushland. This is a 3 part course that follows the entire process of seed collection. We will have one session in the class room, one in the field getting hands on seed collection experience and the final session will involve practical seed cleaning and storage techniques.

To register for Bush Skills for the Hills,
please call the Environmental Services Administration Officer at EMRC on (08) 9424 2216



come celebrate our **heroes!**



CCWA Conservation Awards 2011

15th October 2011 6pm-8pm

Brass Monkey, Cnr William & James Streets, Northbridge

CCWA's annual Conservation Awards acknowledge individuals and groups in the community who have demonstrated a long-term commitment to the Western Australian environment.

These awards are about rewarding those individuals and groups in the environment movement whose passion and dedication have contributed to the protection of our precious environment. They are our conservation heroes.

The recipients of the following awards will be announced:

- Bessie Fieschieth Conservation Award
- Young Environmentalist Award
- Conservation Council of WA Honours List
- John Oldham Conservation Employee Award
- Len Howard Community Group Award

Please join us for this special event.

To confirm your attendance please RSVP to: conswa@ccwa.org.au or (08) 9420 7266



Award Winning **Living Smart Course for Mundaring**

6 weekly sessions, starting 7.00 pm – 9.15 pm Thursday, 20 October at

Mundaring Shire Civic Centre, Great Eastern Highway, Mundaring

Cost: Free

Enrolments Are Essential

Living Smart...

Is a practical course in sustainability, which will teach you valuable skills to reduce your ecological footprint and save money. You will learn handy hints on managing waste, water and energy, plus alternative transport options and the safe use of household chemicals. Expert speakers will show you how to grow your own food and how to increase biodiversity in your garden to attract native wildlife. Learn how to make your home warm in winter and cool in summer. Come and meet like-minded people and see how easy it can be to start the change for you and your family.

To book phone (08) 9290 6666 or email shire@mundaring.wa.gov.au

Or get more information from the facilitator, Keith Sillitoe, phone (08) 9299 7025 or email: keithsillitoe@hotmail.com

conservation week 2011: you in the environment oct 15-22 statewide

Conservation Week is the largest community focused environmental event in WA, when communities come together to celebrate our unique environment and promote action towards building a sustainable future.

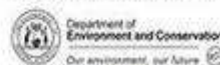
The aim of Conservation Week is to highlight issues facing the environment in our State and to celebrate the work of conservation organisations, community groups and individuals all across WA.

Conservation Week is all about "You in the Environment" to remind us that we are an integral part of life on earth, but uniquely we have the power to protect or destroy it.

Join us for the official launch of Conservation Week 2011 on 15th October in conjunction with the the CCWA Conservation Awards!

Please RSVP your attendance to: conswa@ccwa.org.au or (08) 9420 7266

Conservation Week is proudly sponsored by





Bushfire Research Forum to be held in October

A two-day forum detailing the latest bushfire research will soon be held in Perth. The Western Australian Bushfire Research Forum 2011—to be held at The University of Western Australia (UWA) on 12–13 October 2011—will showcase local contemporary science that supports bushfire management in WA. It will be co-hosted by DEC, the Fire and Emergency Services Authority, the Western Australian Local Government Association (WALGA) and UWA.

DEC Principal Fire Projects Officer Rick Sneeuwjagt said the forum will feature 24 researchers and leading experts who will deliver their latest findings and management implications in a range of disciplines, including fire behaviour, fire ecology, environmental and social sciences.

"The forum will provide a valuable opportunity for people responsible for and interested in the planning and implementation of bushfire management, protection and conservation programs to

share and expand the base of knowledge needed to approach the future in the face of changing climates and increasing community risks and expectations," he said.

The fire ecology research studies included in the first day of the forum will cover all parts of the state, including the Kimberley, the deserts of the Pilbara and Goldfields, the Kwongan coastal heaths, the forests of the south-west and the woodland reserves of the Wheatbelt. The second day will focus on fire behaviour studies and the contribution of prescribed fire in controlling major bushfires.

Lead speakers will include:

Dr Jeremy Russell-Smith, Fire Management Consultant, Charles Darwin University; and Bushfires NT

Landscape-scale fire research in northern Australia: leading to customary fire management to transform the social and biodiversity landscape.

Dr Neil Burrows, Senior Principal Research Scientist, WA Conservation Science Centre DEC
Preliminary findings on the ecological impacts of applying a fine-grain fire mosaics regime in southern forest ecosystems near Walpole. Fire regimes in the arid zone of WA.

Prof Doug Bird and Dr Rebecca Bird, Anthropology Department, Stanford University
Martu People fire regimes and foraging strategies in Australia's Western Desert.

Phil Cheney, Senior Principal Research Scientist CSIRO (retired), Canberra
The 2005 Perth Hills bushfire: a case study on the effectiveness of fuel reduction burns in containing major forest fires.

Dr Lachlan McCaw, Principal Research Scientist, Science Division, DEC, Manjimup
Studies of behaviour and impacts of major WA and Victorian bushfires in relation to prescribed burns.

Prof Neal Enright, School of Environmental Science, Murdoch University
Fire frequency in Northern Sandplain Kwongan.

Prof George Milne, School of Computing Science and Software Engineering, The University of Western Australia

Development and application of the UWA bushfire simulator.

Dr Sarah Legge, National Conservation and Science Officer, Australia Wildlife Conservancy
Development and use of biodiversity indicators for evaluating fire management in the Kimberley.

Chief Scientist of WA Professor Lyn Beazley will also be addressing the forum on Thursday 13 October. For more details about the forum or to access the registration form visit www.dec.wa.gov.au/content/view/full/6562/1916/. Registration fees apply.



In this issue Page 1: Bushfire Research Forum to be held in October Page 2: Petrel rescue in the south-west • DEC books take out prizes

18/11 Page 3: 'Trash My Ad' competition a success Page 4: Warning against picking wildflowers • Kimberley schools strive to become Waste Wise

exit ECN



EMRC would like to introduce.....

Michelle Yeomans as a new member of the environmental services team. Michelle commenced on 5 September as NRM officer for the Eastern Hills Catchment Management Program. Michelle was previously employed as Project Officer for Green Skills, where she organised community events and coordinated landcare projects, including a program of sustainable land management workshops, native tree decline field days and treatment trials. Michelle holds a double degree in Environmental Biology and Geography.



Join the Friends of Piesse Brook for a **Busy Bee**
Sunday, 23 October 2011
9.45 am - 12.00 pm



We meet at the entrance gate to the Kalamunda National Park (at the far end of Schipp Road).

If you would like to join us, please contact either Gerry Brown on 9293 2517 or email Bridgett Hogarth bhogarth@ozemail.com.au for further details.



WHITEMAN PARK
RECREATION & CONSERVATION RESERVE

Whiteman Park's 25th Anniversary CELEBRATION FETE

Sunday 16 October, 2011

Whiteman Park invites you to come and celebrate our silver jubilee with a huge party!

Spanning the whole Village, from Revolutions to the Tractor Museum, there will be rides, market stalls, displays, entertainment, plus loads of activities for the whole family.

The 96fm Street Team will be in attendance and we have plenty of prizes to give away! Enjoy the 25th Anniversary Specials on offer, from 1994 admission prices at the Motor Museum, to spot prizes at the Village Cafe. This is set to be a fabulously fun day for all involved.

We hope to see you here for our silver jubilee!

Location: Village, Whiteman Park
Time: 10.00 am - 3.00 pm
Cost: Free event



What's a Conversation Café?

It's a chance to share your ideas

And have a cuppa!

It's FREE and there's one around the corner!

Bendigo Bank

Seniors Week Conversation Cafés

Tuesday 8 November 10.00am - 12.30pm

Join your local community for a FREE delicious morning tea at a Conversation Cafe near you.....

What is a Conversation Café?

An informal chat over a cuppa—a way to express your views about your community and the issues important to you. Your ideas will contribute to the Shire of Mundaring Positive Ageing Strategy 2012.

- | | |
|--------------------|--|
| Wooroloo | Wooroloo Primary School, Wade St |
| Mt Helena | Mt Helena Primary School, Lot 289A Keane St |
| Chidlow | Chidlow Volunteer Bush Fire Brigade, cnr Old Northam Rd & Willcox St |
| Mundaring | 'The Connection Centre', 1470 Stoneville Rd Sacred Heart School, 200 Coolgardie St Mundaring Country Women's Association Jacoby St (east end of Sculpture Park) Hills Community Support Group 'Wahroonga', 2 Craig St Mundaring Community Men's Shed, 3205 Jacoby St |
| Parkerville | Parkerville Primary School, 16 Parker Rd |
| Darlington | Treetops Montessori School Darlington Lesser Hall, Owen Rd |
| Swan View | Swan View Community Association Brown Park Community Centre, Salisbury Rd |

Contact Kaye Bannerman 9290 6683 or email hubcoordinator@mundaring.wa.gov.au for more information or if you have an access requirement.



RIVER GUARDIANS

Dear River Guardian,

We are delighted to invite you and your friends and family to participate in our first-ever River Wise training series.

Don't miss this chance to make a difference to your local environment and cut your bills at the same time!

Learn to become River Wise at home, in the garden and around the Swan Canning Riverpark by attending free and fun workshops about river science and river-friendly living.

The River Wise program includes four sessions involving presentations, discussion groups, field trips and hands on activities.

Register for all four sessions and go into the draw to win a Great Gardens sustainable garden makeover valued at \$2,500! Terms and conditions apply.

» [River Wise Session Details, Registration and Terms and Conditions](#)

Also, don't miss the upcoming River Guardians River Culture event! Join Indigenous elder Leonard Thom as he shares Noongar history and culture through activities and stories. [Find out more](#) »

We look forward to seeing you soon.

Kind Regards,

Marnie Giroud | River Guardians Program Manager
Swan River Trust
Level 1, Fortescue Centre, 20 Terrace Road, East Perth 6004
P: 08 9278 0900 | guardians@swanrivertrust.wa.gov.au
Web: www.swanrivertrust.wa.gov.au | www.riverguardians.com
CARING FOR THE SWAN CANNING RIVERPARK

BIG SPLASH CONFERENCE

Saturday 12 November 2011, 9.30am - 4:00pm
eCentral, 140 Royal Street, East Perth

FOCUS QUESTION

" HOW DO WE SEE WESTERN AUSTRALIANS LIVING IN 20 YEARS "

- Pollution, running out of resources, expanding salt lakes, increased storm damage...?
- Clean air, clean energy, green industries, liveable cities, wilderness areas preserved...?

Help build the community; Come & be part of the conversation

The Big Splash Open Space conference is WA's largest and most inspiring conversation for sustainability

A chance to share ideas meet people and coordinate collective action

For more information visit www.sustainablewa.net.au

Who is it for?

Anyone passionate about helping to build sustainable communities within WA

Register online at www.sustainablewa.net.au
Early bird fee : \$10 (before 1st November)
On the Day fee : \$15

2011 Maylands **Free Entry**
Home Expo
 and Sustainable Living Fair

Saturday 15 October 2011
 10am to 3pm



Special Guest Workshop by
Josh Byrne
 ABC1 TV's Gardening Australia

MPA Facilities in Maylands
 cnr Caledonian Ave and Foundry St

Great workshops:

- Energy saving practical skills for homeowners and renters
- Bokashi composting
- Plumbing
- Painting
- Gardening workshop with Josh Byrne

Workshop RSVPs to maylands@mp.wa.gov.au or ring 9370 3550

Plus:

- Children's activities hosted by Environment House
- Sausage sizzle

For full details visit:
www.maylandshomeexpo.com



Printed and authored by Lisa Baker, 246 Staudert St Inglewood WA 6052



Free Workshop Timetable

Numbers are limited so booking is essential.

10.15am Practical Energy Saving Skills Workshop (for Homeowners and Renters)

This workshop is for homeowners and renters to learn and apply skills that will have a significant impact on energy bills. How to draught-proof your home effectively, applying window film as a retrofit alternative to double glazing, and applying hot water pipe lagging, will all be demonstrated with plenty of expert tips. Presenters are Rob Gully and Alan Benn from Environment House. Venue: Multipurpose Workshop, MPA Group Facilities – one hour

11.00am eTool Software for Sustainable Design, on ABC's New Inventors

Using "Life Cycle Assessment", eTool will show you how to create a genuinely "zero carbon" home that includes the embodied and operational energy impacts. Ensure you cut through the "green-wash" and maximise your positive impact on the planet and your hip pocket. Venue: Painting Training Room 6, MPA Group Facilities – 45 minutes

11.30am Bokashi Composting

Bokashi composting was developed in Japan and is perfect for people in apartments, homes and rental properties. This system is easy to use, makes use of all household scraps, and only a small area of garden is needed to bury this superb soil conditioner. If other methods have failed, make sure you give this a try. Venue: Environment House Stall, Painting Building, MPA Group Facilities- 20 minutes

12.00pm Sustainability in Painting

John Makrinos from EnviroPainter MPA is training painters in innovative painting practices to ensure householders have significantly reduced exposure to Volatile Organic Compounds and paint is disposed of in an environmentally friendly way. This excellent workshop is useful for anyone painting themselves or using painting contractors to ensure you get the best outcome for your home. Venue: Painting Training Room 6, MPA Group Facilities - 45 minutes

1.00pm Josh Byrne Special Guest Gardening Workshop

Venue: Multipurpose Workshop, MPA Group Facilities - 45 minutes

1.30pm Design a more energy efficient and sustainable new home

Presented by Sid Thoo, an architect specialising in energy efficient building design and consulting. Venue: Painting Training Room 6, MPA Group Facilities - 45 minutes

2.00pm Sustainability in Plumbing with Bob Goodchild, Enviro West MPA Skills

Bob Goodchild from Enviro West MPA Skills, is training plumbers to help people who are looking for options to save water - including rainwater collection systems, greywater systems, waterwise reticulation systems, energy and water saving hot water systems, toilets, taps and showers. This workshop is designed to help you ask the right questions and showcase sustainability technologies. Venue: Multipurpose Workshop, MPA Group Facilities - 45 minutes

Free Cycle Perth's Eastern Region Brochure



EMRC and Mundaring Tourism Association coordinated the development of an innovative, 64-page, DL size publication which showcases a range of cycle and tourism experiences accessible by public transport from the Midland Railway Line.

The free publication is aimed at recreational cyclists with predominately on-road riding (suited to beginner, family and serious recreation riders, and mountain biking rides in the Perth Hills), with rides to suit a range of different experience levels.

The pocket-sized brochure covers 13 rides throughout Perth's Eastern Region, which includes on-road and shared path rides along the Swan River foreshore, through the Town of Bassendean and Cities of Bayswater and Belmont; through the Swan Valley in the City of Swan; and a range of road and mountain biking rides up in the Perth Hills in the Shires of Kalamunda and Mundaring.

To request your free copy, please contact Beth Caniglia on (08) 9424 2241 or tourism@emrc.org.au.

The Cycle Perth's Eastern Region guide is a collaborative project between the Eastern Metropolitan Regional Council (EMRC), the Mundaring Tourism Association, the Department of Transport, the Department of Sport and Recreation, Lotterywest and Tourism Western Australia.

End of Year Volunteer's Celebration Event 2011

Please note the End of year volunteer celebration event will be held on :

Sunday, 4th December 2011

Time: 3.00 pm - 6.00 pm

Venue: Nearer to Nature, The Perth Hills National Parks Centre, Allen Road, Mundaring.

Invitations for the event will be sent in October/November 2011

Thanks from the EHCMP team.



CONTACT DETAILS

Brad Thompson

Bushcare Co-ordinator
Shire of Mundaring
Telephone: (08) 9290 6685
Email:
bcc@mundaring.wa.gov.au

Karen Warner

NRM Co-ordinator, EMRC
Telephone: (08) 9424 2242
Mobile: 0428 101 223
Email: karen.warner@emrc.org.au

Michelle Yeomans

NRM Officer, EMRC
Telephone: (08) 9424 2264
Mobile: 0427 088 213
Email:
michelle.yeomans@emrc.org.au

Shenaye Hummerston

Environmental Reserves Officer
Shire of Kalamunda
Telephone: (08) 9257 9806
Email:
shenaye.hummerston@kalamunda.wa.gov.au

Renee D'Herville

NRM Officer, EMRC
Telephone: (08) 9424 2245
Mobile: 0408 924 989
Email:
renee.dherville@emrc.org.au

THE NOONGAR SEASONS 6 TRADITIONAL SEASONS

KAMBARANG - OCTOBER TO NOVEMBER

A definite warming trend is accompanied by longer dry periods and fewer cold fronts crossing the coast. The height of the wildflower season, Kambarang offers a riot of colour, including verticordia insignis, mangles kangaroo paw, blue leschenaultia, graceful honeymyrtle, roadside tea-trees and elegant beaufortia. This is a busy time in any garden, with light pruning of shrubs to reduce woodiness, the removal of old, dead plant material from the garden beds, and pruning of faded flowers paws and patersonia occidentalis after they finish flowering.



Many groups now combine larger groups up to 100 or more as the coastal area has abundant food to feed larger groups.

Sourced from: www.kaditj.com.au/web-data/Stationery/CulturalNotesSeasons.html



If you would like to receive the Greenpage by email please contact the Administration Officer at EMRC at envirotemp@emrc.org.au with "Subscribe to Greenpage" in the subject heading and your contact details.

If you do not have email and would like to receive the Greenpage by post, please contact the Administration Officer by telephone on (08) 9424 2216.



The Greenpage newsletter is compiled by EMRC, utilising multiple resources and authors. The views and opinions expressed within do not necessarily reflect those of EMRC or the project sponsors listed below.

Proudly supported by





At *Urban Nature* we are dedicated to providing support for land managers working to protect, manage and restore the rich biodiversity of the bushlands and wetlands in the Department of Environment and Conservation's (DEC's) Swan Region.

We are currently creating an interactive feature for our website, which will allow people to locate and contact their local conservation groups.

Your assistance is sought in completing the following survey, which will help us design the website. Once completed, please post your survey to 7 Turner Avenue, Bentley, 6102 or email to Ellen O'Brien at Ellen.O'Brien@dec.wa.gov.au or urban.nature@dec.wa.gov.au.

Please feel free to call us on (08) 9423 2900 if you have any questions or if you are no longer the representative or contact person for your group.

| | |
|---|--|
| 1. Your Organisation Name: | |
| 2. Site name: | |
| 3. Landowner/land manager/ Organisation: | |
| 4. Location: | |
| 5. Part of the project is the construction of a map for the web page. To help us put this together please describe the defining boundaries (roads, land marks) of the areas your group co serves and manages. If possible, attach a map and description of the reserve. | |
| 6. Your website: | |
| 7. Name of current organisation's representative or contact person: | |
| 8. Role: | |
| 9. Phone number: | |
| 10. Address: | |
| 11. Post Code: | |
| 12. Email address: | |
| 13. Do you agree to have your organisation' details posted online? | |
| 14. Is your reserve a <i>Bush Forever</i> site? | |
| 15. Do you receive Urban Nature's quarterly publication <i>Bushland News</i> ? Would you like to subscribe? | |

Thank you for taking part in this survey. If your details change, please call (08) 9423 2900 or email urban.nature@dec.wa.gov.au. We will be in contact annually to maintain the database.